



FOO

FRONTEX OPERATIONAL OFFICE

Athens, December 2013

BACKGROUND

FRONTEX Regulation / Specialized Branches (art. 16)

Since 2008, EU Policy Makers insisted on asking FRONTEX to consider Sp. Branches:

Commission Communication

European Parliament (Moreno's Report)

European Pact on Immigration & Asylum

Council Conclusions

Stockholm Programme

MAIN PRINCIPLES

Located in Piraeus / HCG Headquarters

Pilot Project till end of 2013 – Liaison Office till end of 2015

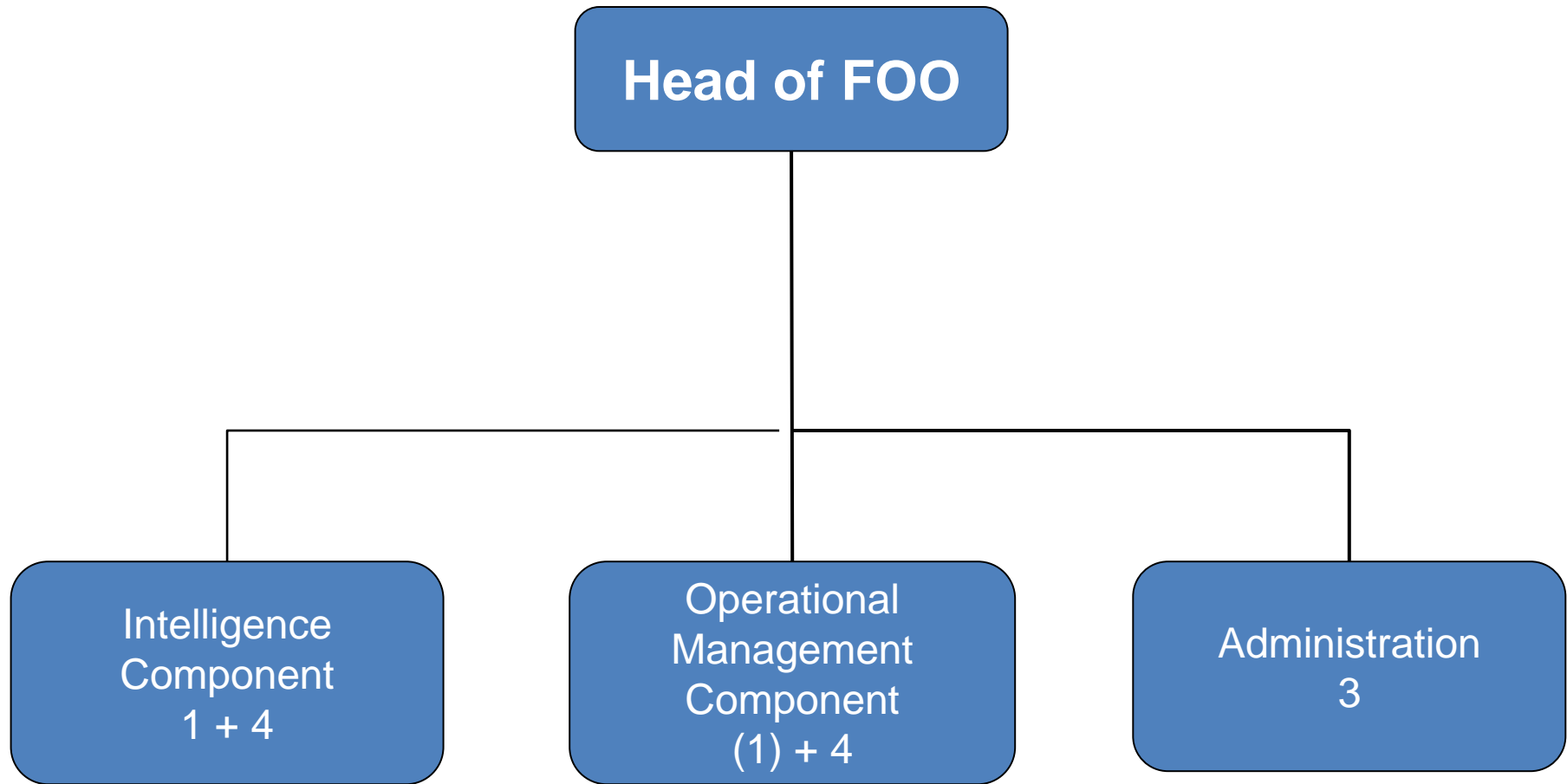
Monitoring/Evaluation by Steering Committee – MB

Regional approach (GR,IT,MT,CY)

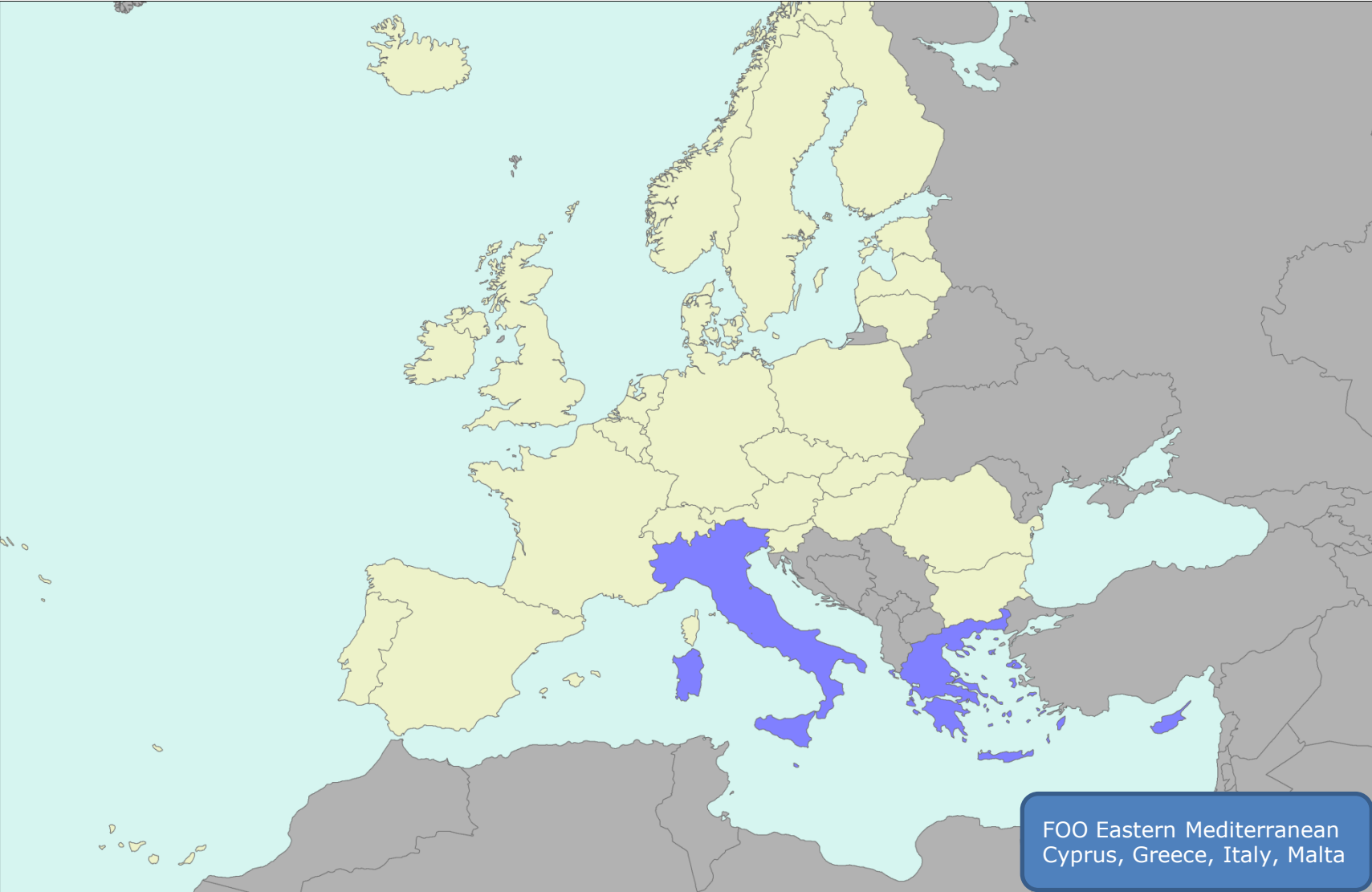
Decision making remains in HQ

Support operational / other activities coordinated by Frontex

FOO ORGANIZATIONAL CHART



FOO Region (Core Member States)



FRONTEX Core Activities

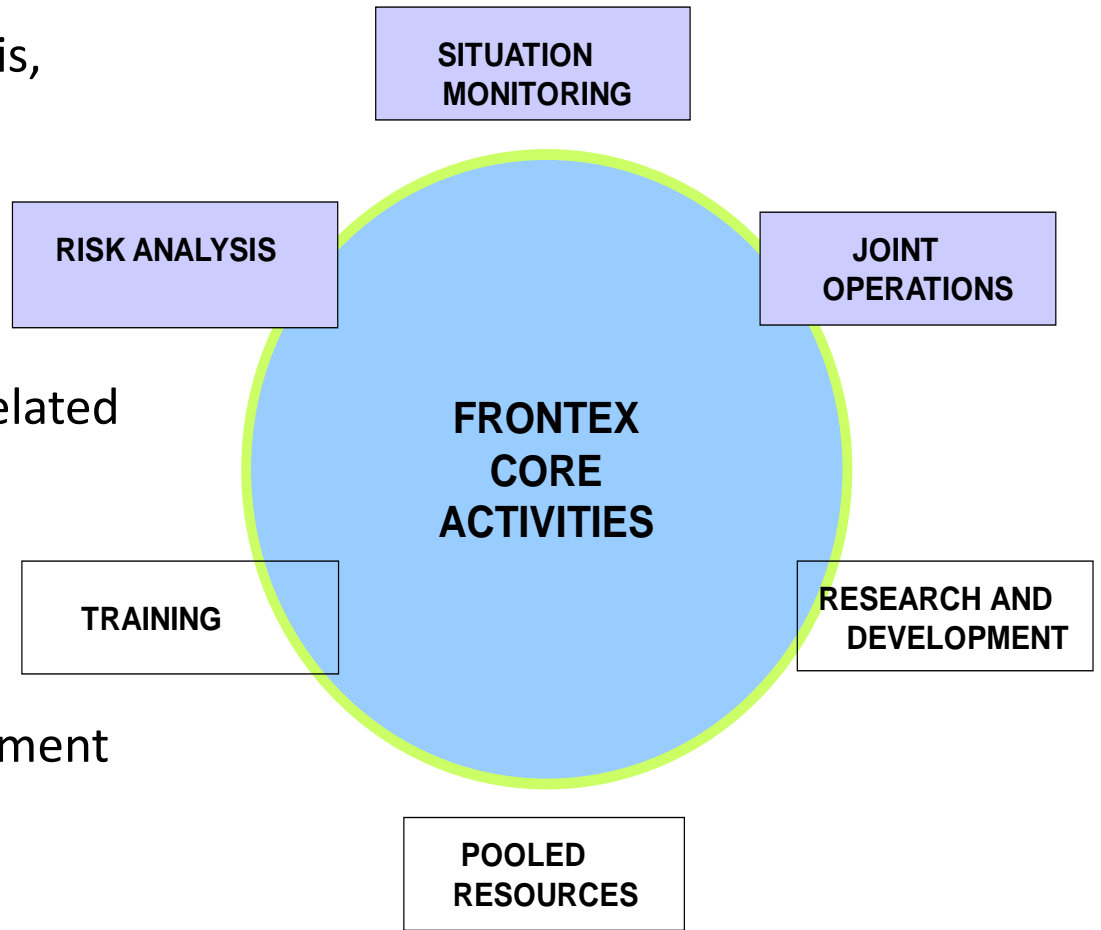
FOO contributes to risk analysis, situation monitoring and joint operations activities

FOO does not perform tasks related to:

Training

Pooled resources

Research and development



FOO GENERAL TASKS

- Contribution to the implementation of JOs and JROs, focus on monitoring and supporting the tasks of ICCs
- Participation in the preparation and contribution to the evaluation of JOs including JROs, support to decision making
- Contribution to border management and capacity building activities including return operations
- Providing information for situational awareness in the region and reporting on events related to JOs
- Gathering and assessing information and intelligence for risk analysis purposes
- Networking with all stakeholders involved
- Promoting the cooperation with EASO, Europol and other EU bodies

FOO Region – Operations 2013

Poseidon Regional Program:

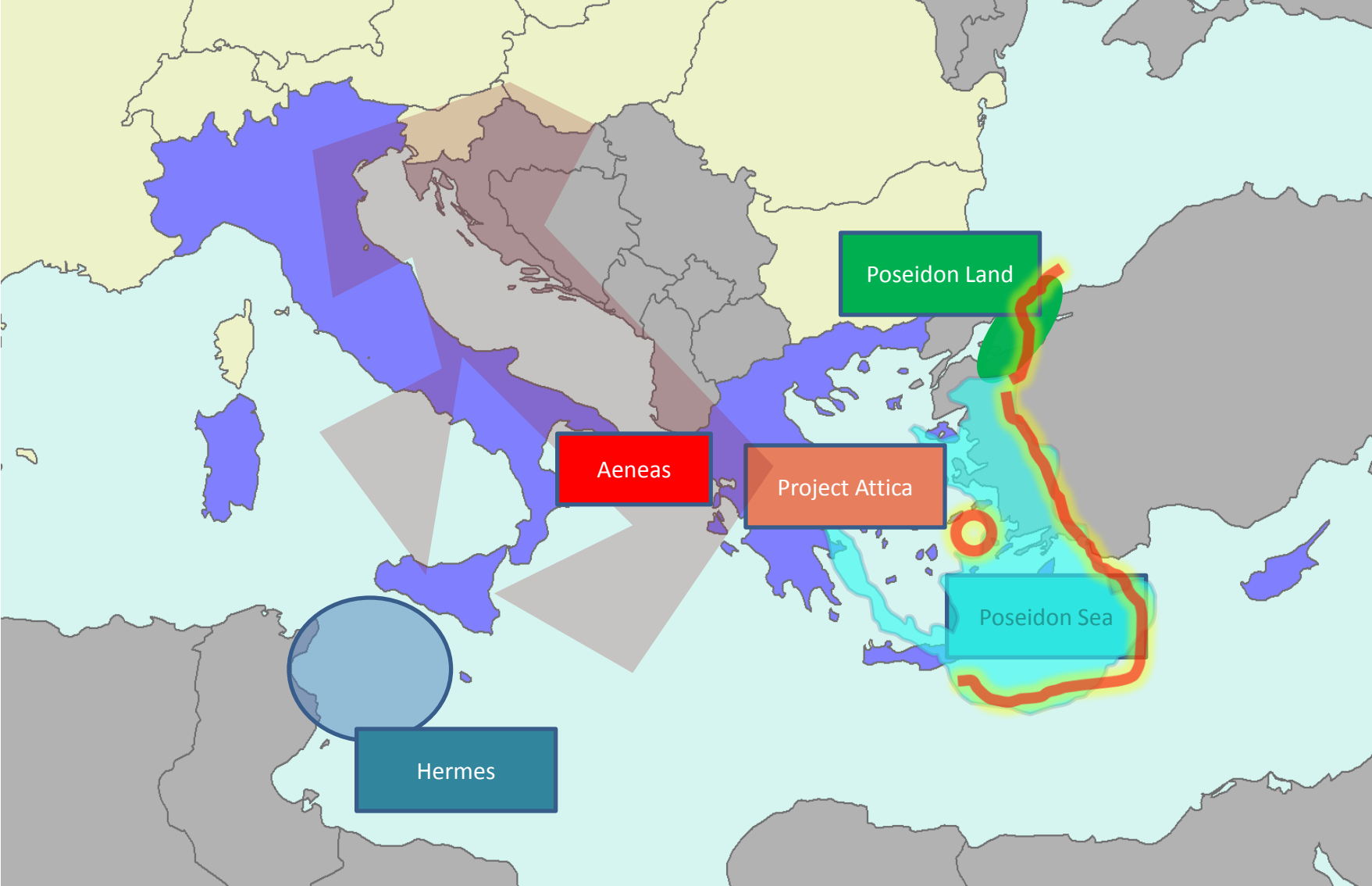
- JO POSEIDON 2013 Land
- JO POSEIDON 2013 Sea
- PROJECT ATTICA 2013

JO HERMES 2013

JO AENEAS 2013

FOCAL POINTS (Land, Sea, Air)

FOO REGION (Operations)



FOO

**Frontex Operational Office
Akti Vasiliadi Gate E1-E2
Piraeus Port
18510 Piraeus
Greece**

Tel. +30 210 406 4730

Fax:+30 210 406 4551

Email: frontex@frontex.europa.eu

www.frontex.europa.eu

